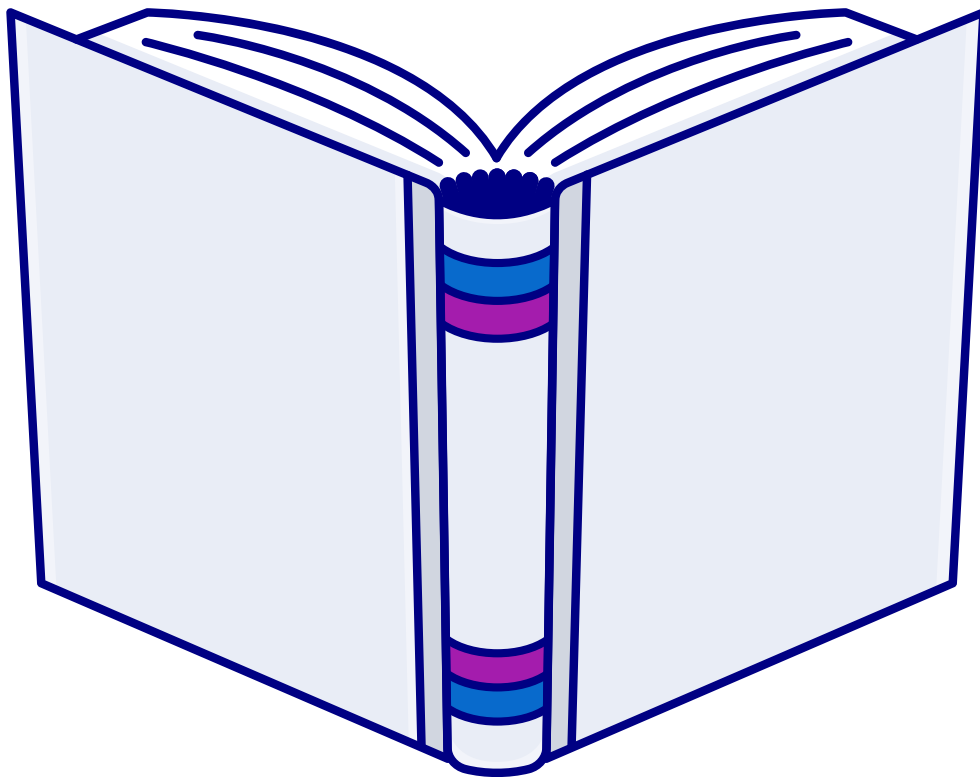




Spine Width

CALCULATOR



Determining The Spine Width

Cover spine width is determined by the binding type and the total number of pages. Perfect Bound covers use a formula and require a minimum of 32 pages to create. All Hardcover covers use a table with page quantity ranges and require a minimum of 24 pages. Each template includes a spine guide preset to the minimum width dimension allowed. Once you know the total number of interior pages and have chosen a bind type for your book, reference the correct formula or table in this PDF and determine your spine width dimension.

Adjusting the Spine Width

Lulu offers templates in different formats that allows cover creation in the software you're most comfortable with. Below is a brief description on how to adjust the spine width using Adobe InDesign or Adobe Photoshop. The templates are available in PDF and PNG formats as well. Every cover template spine guide is preset to the minimum width dimension. Keep this in mind when adjusting your spine.



Adobe InDesign

Use the page tool to adjust the spine page width.

1. Locate the **Page Tool** from the tools panel and select it.
2. In the pages panel, click on the spine page (page 2 of the spread). The page will appear highlighted in the pages panel. Specify the following settings in the Liquid Layout control panel (Window > Interactive > Liquid Layout):

Liquid Page Rule:

Object-based

Object Constraints: Resize with Page:

Width

3. After determining your spine dimensions by using the formula (perfect bound) or the calculator table (casewrap) found in this PDF, resize the page with the Height and Width widgets in the control bar. The entire cover should update automatically and is now ready for your artwork.

Note: *The document must be setup with facing pages checked for the front cover page to automatically shuffle.*



Adobe Photoshop

Adjust the canvas size, revise the spine width, and position the cover guides.

1. Subtract the existing minimum spine width dimension listed on the front cover from the spine dimension found by using the formula (perfect bound) or the calculator table (case-wrap) in this PDF and add that value to the canvas size. Go to **Image > Canvas Size** and enter in the revised total width dimension.
2. Use the path selection tool to select the spine shape layer in the guides folder and enter in the correct width dimension found using the formula or spine calculator table.
3. Center align the spine guide, right align the front cover guide, and left align the back cover guide to the document spread. Make sure guide layers are positioned correctly and there are no issues.

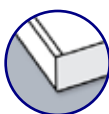
Exporting For Print

Upon completion of your cover, load the Adobe PDF preset file "Lulu-Cover.joboptions". This PDF preset exports the cover as spreads and with document bleed. Your cover is now ready for print.

Spine Width Calculator

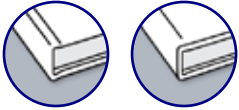
Perfect Bound Covers

Use the formula to calculate the spine width dimension in inches.



$$\text{Spine Width} = (\text{Interior Pages} / 444^*) + 0.06''$$

**For magazine and comic book spine widths, replace 444 with 570 in the formula.*



Casewrap & Dust Jacket Covers

Use the table to determine the spine width dimension.

Page Count	Spine Width (inches)	Spine Width (mm)
0-23	N/A	N/A
*24-84	0.25	6
84-140	0.5	13
140-168	0.625	16
169-194	0.6875	17
195-222	0.75	19
223-250	0.8125	21
251-278	0.875	22
279-306	0.9375	24
307-334	1	25
335-360	1.0625	27
361-388	1.125	29
389-416	1.1875	30
417-444	1.25	32
445-472	1.3125	33
473-500	1.375	35
501-528	1.4375	37
529-556	1.5	38
557-582	1.5625	40
583-610	1.625	41
611-638	1.6875	43
639-666	1.75	44
667-694	1.8125	46
695-722	1.875	48
723-750	1.9375	49
751-778	2	51
779-799	2.0625	52
800	2.125	54