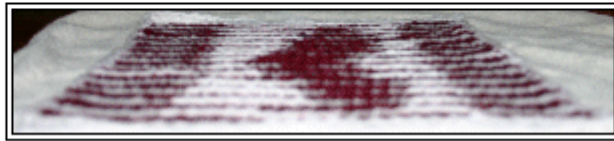




meowy's  
Shadow/Illusion Knit  
Heart Washcloth!



Stacey Cline 2005

---

This is my first attempt at Illusion/Shadow Knitting and at drawing up patterns for it. I haven't been able to find charts for doing this. I started with a heart to see how it goes, and as I do more I'll upload those charts as well. It turns out it's not as hard to knit as I thought it was going to be. Once I figured out what I was doing, the knitting speed went a lot faster.

Please let me know if you find any errors, hopefully I caught them all though! :)

If you make one, I'd love to see a photo!

**Size:**

- About 8 by 11 inches

**Supplies:**

- Size 8 (US)
- Cotton Yarn in a Light and Dark color (4 ply, 100% cotton, Worsted)
- Tapestry Needle or Crochet Hook for weaving in ends.
- Crochet Hook to add design around the edge

© 2005 Stacey Cline (meowy) - [knit@strayalleycat.com](mailto:knit@strayalleycat.com)  
<http://knit.strayalleycat.com>

Pattern not to be used for profit, thank you!  
Contact me if you'd like to offer this in your shop or at clubs/meetings.

I'd love to see a photo of your Illusion Heart Wash Cloth!

## Notes:

- I used maybe 1/4<sup>th</sup> or 1/3<sup>rd</sup> of a 2.5oz/70.9g ball of dark cotton, and a little bit more than that of the light color. I don't know exactly how much was used though. The white I used was on a cone.
- This is worked in two rows light, two rows dark and continue to alternate this way. The first row of the color's pair is always knitted across. The rows with colored blocks on them, you'll purl the white squares and knit the colorized squares. The first row of the color pair is knit. Second row of the pair you purl until you reach the colored boxes and then you knit the color areas.

## The Pattern:

Cast on 30 stitches.

**Row 1:** Knit across

**Row 2:** Knit across

### *Begin Heart Pattern*

I've written it out below in text but you'll find the chart at the bottom as well.

**Row 3 (LC):** Knit across

**Row 4 (LC):** p7, k16, p7

**Row 5 (DC):** Knit across

**Row 6 (DC):** p6, k1, p16, k1, p6

**Row 7 (LC):** Knit across

**Row 8 (LC):** p7, k16, p7

**Row 9 (DC):** Knit across

**Row 10 (DC):** p6, k1, p9, k3, p4, k1, p6

**Row 11 (LC):** Knit across

**Row 12 (LC):** p7, k9, p3, k4, p7

**Row 13 (DC):** Knit across

**Row 14 (DC):** p6, k1, p8, k5, p3, k1, p6

**Row 15 (LC):** Knit across

**Row 16 (LC):** p7, k8, p5, k3, p7

**Row 17 (DC):** Knit across

**Row 18 (DC):** p6, k1, p7, k6, p3, k1, p6

**Row 19 (LC):** Knit across

© 2005 Stacey Cline (meowy) - [knit@strayalleycat.com](mailto:knit@strayalleycat.com)  
<http://knit.strayalleycat.com>

Pattern not to be used for profit, thank you!  
Contact me if you'd like to offer this in your shop or at clubs/meetings.

I'd love to see a photo of your Illusion Heart Wash Cloth!

**Row 20 (LC):** p7, k7, p6, k3, p7  
**Row 21 (DC):** Knit across  
**Row 22 (DC):** p6, k1, p6, k7, p3, k1, p6  
**Row 23 (LC):** Knit across  
**Row 24 (LC):** p7, k6, p7, k3, p7  
**Row 25 (DC):** Knit across  
**Row 26 (DC):** p6, k1, p5, k7, p4, k1, p6  
**Row 27 (LC):** Knit across  
**Row 28 (LC):** p7, k5, p7, k4, p7  
**Row 29 (DC):** Knit across  
**Row 30 (DC):** p6, k1, p4, k7, p5, k1, p6  
**Row 31 (LC):** Knit across  
**Row 32 (LC):** p7, k4, p7, k5, p7  
**Row 33 (DC):** Knit across  
**Row 34 (DC):** p6, k1, p3, k7, p6, k1, p6  
**Row 35 (LC):** Knit across  
**Row 36 (LC):** p7, k3, p7, k6, p7  
**Row 37 (DC):** Knit across  
**Row 38 (DC):** p6, k1, p4, k7, p5, k1, p6  
**Row 39 (LC):** Knit across  
**Row 40 (LC):** p7, k4, p7, k5, p7  
**Row 41 (DC):** Knit across  
**Row 42 (DC):** p6, k1, p5, k7, p4, k1, p6  
**Row 43 (LC):** Knit across  
**Row 44 (LC):** p7, k5, p7, k4, p7  
**Row 45 (DC):** Knit across  
**Row 46 (DC):** p6, k1, p6, k7, p3, k1, p6  
**Row 47 (LC):** Knit across  
**Row 48 (LC):** p7, k6, p7, k3, p7  
**Row 49 (DC):** Knit across  
**Row 50 (DC):** p6, k1, p7, k6, p3, k1, p6  
**Row 51 (LC):** Knit across  
**Row 52 (LC):** p7, k7, p6, k3, p7  
**Row 53 (DC):** Knit across  
**Row 54 (DC):** p6, k1, p8, k5, p3, k1, p6  
**Row 55 (LC):** Knit across  
**Row 56 (LC):** p7, k8, p5, k3, p7  
**Row 57 (DC):** Knit across  
**Row 58 (DC):** p6, k1, p9, k3, p4, k1, p6  
**Row 59 (LC):** Knit across  
**Row 60 (LC):** p7, k9, p3, k4, p7  
**Row 61 (DC):** Knit across  
**Row 62 (DC):** p6, k1, p16, k1, p6  
**Row 63 (LC):** Knit across  
**Row 64 (LC):** p7, k16, p7  
**Row 65-67 (LC):** Knit across rows

© 2005 Stacey Cline (meowy) - [knit@strayalleycat.com](mailto:knit@strayalleycat.com)  
<http://knit.strayalleycat.com>

Pattern not to be used for profit, thank you!  
Contact me if you'd like to offer this in your shop or at clubs/meetings.

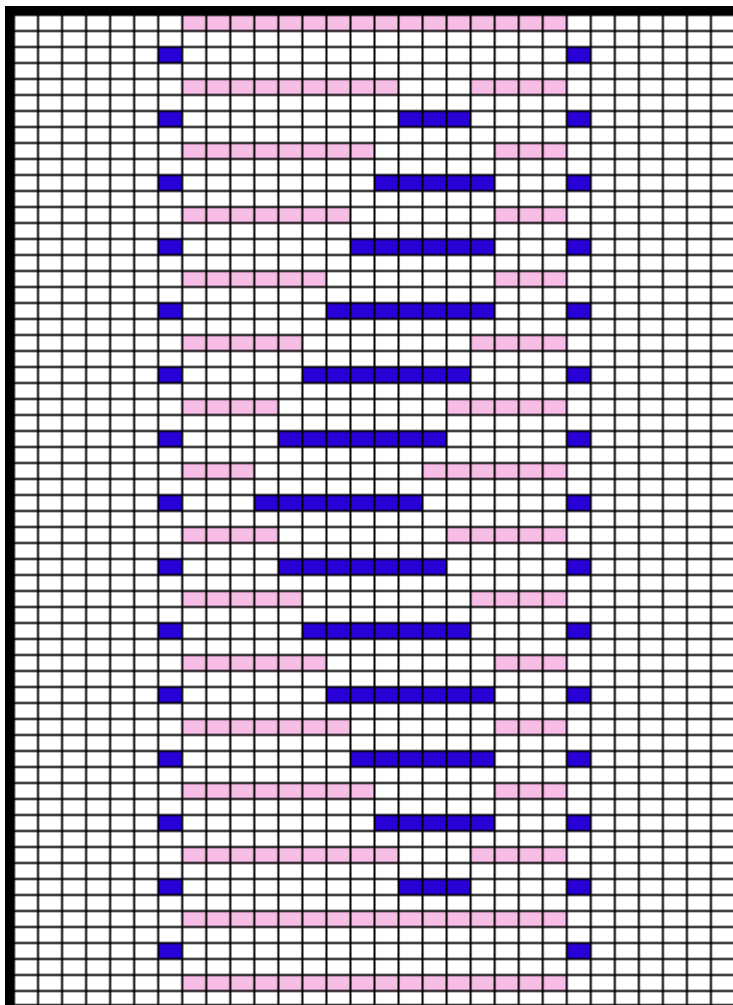
I'd love to see a photo of your Illusion Heart Wash Cloth!

**Bind off**, don't cut yarn if you want to make the edging in the light color.

Crochet an edge around. I did a single chain crochet I think it's called? My crochet skills aren't very good yet. Just go around the edge and make with the basic edging. So it won't curl up :)

### Chart for Illusion Heart:

I knitted from the bottom up.



© 2005 Stacey Cline (meowy) - [knit@strayalleycat.com](mailto:knit@strayalleycat.com)  
<http://knit.strayalleycat.com>

Pattern not to be used for profit, thank you!  
Contact me if you'd like to offer this in your shop or at clubs/meetings.

I'd love to see a photo of your Illusion Heart Wash Cloth!