

OPTIONAL TREBLE INSTRUMENT

DRAGON SLEIGH

CLARE LEWIS

♩. = 80

4 8

13 **VERSE 1**

24

34

39

45 **CHORUS 1**

4

57

65

73

8

81

VERSE 2



91



101



111

CHORUS 2

4



123

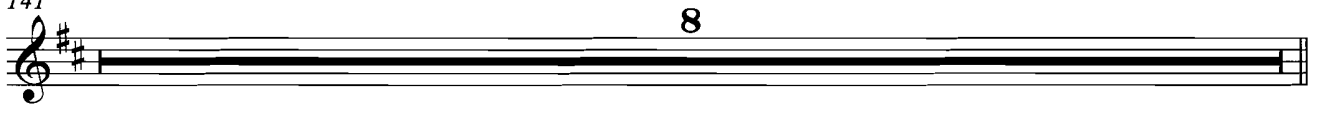


132



141

8



149

VERSE 3



158



168



175



181

4



TO ORIGINAL OR TO ALTERNATIVE ENDING

SIMPLE OPTIONAL TREBLE INSTRUMENT

DRAGON SLEIGH

CLARE LEWIS

$\text{♩} = 80$

4 8

13 **VERSE 1**

24

34

39

45 **CHORUS 1**

4

59

66

73

8

81 **VERSE 2**

91

101

111 **CHORUS 2**

125

133

141

149 **VERSE 3**

158

168

175

181

TO ORIGINAL OR TO
ALTERNATIVE ENDING

ORIGINAL ENDING (KEY CHANGE)

185

OPTIONAL INSTRUMENTAL CHORUS



197



206



213



217

FINAL CHORUS



229



241



245



ALTERNATIVE ENDING (NO KEY CHANGE)

257

OPTIONAL INSTRUMENTAL CHORUS



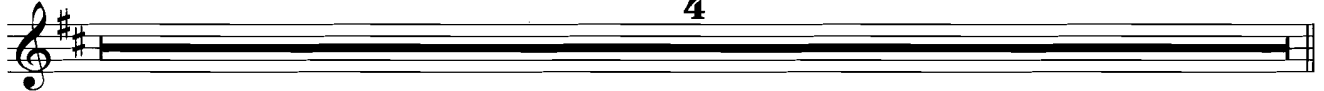
268



278



285



4

289

FINAL CHORUS



301



313



4

317



12

SIMPLE OPTIONAL BASS INSTRUMENT

DRAGON SLEIGH

CLARE LEWIS

♩. = 80

4 8



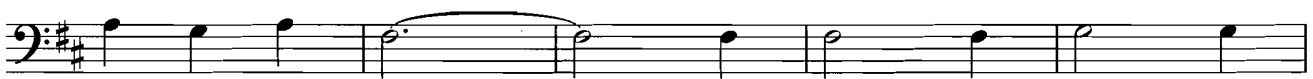
13 VERSE 1



24



34



39

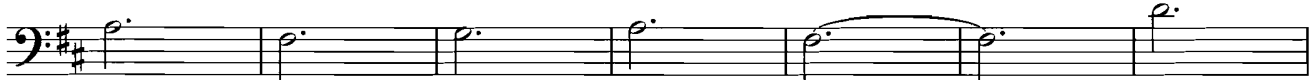


45

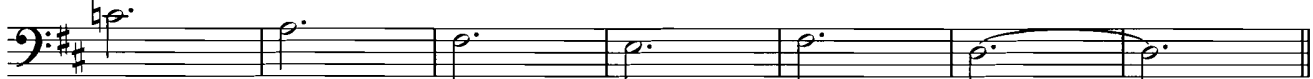
4 CHORUS 1



59

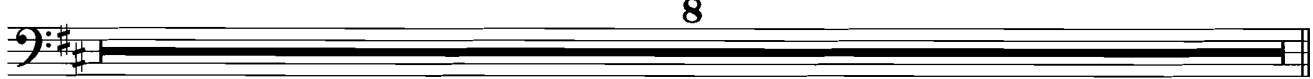


66

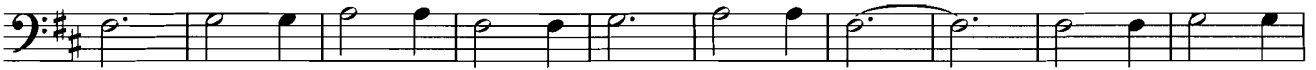


73

8



81 **VERSE 2**



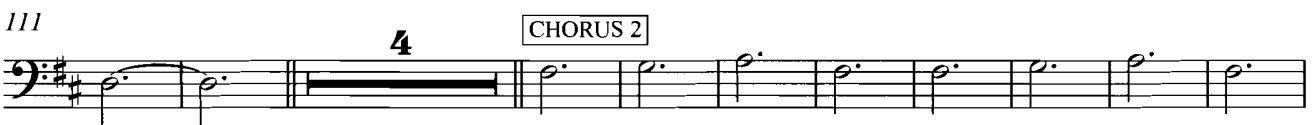
91



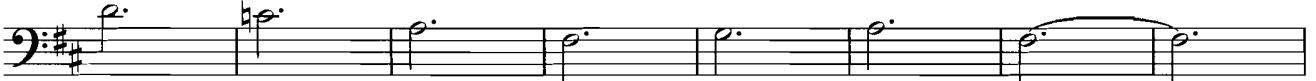
101



111



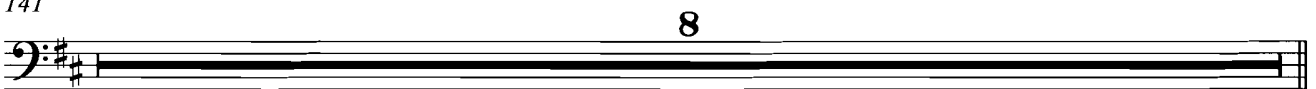
125



133



141



149 **VERSE 3**



158



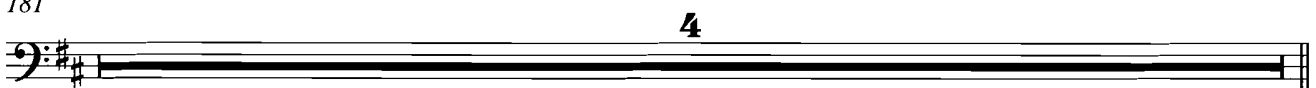
168



175



181



TO ORIGINAL OR TO
ALTERNATIVE ENDING

ORIGINAL ENDING (KEY CHANGE)

185

OPTIONAL INSTRUMENTAL CHORUS



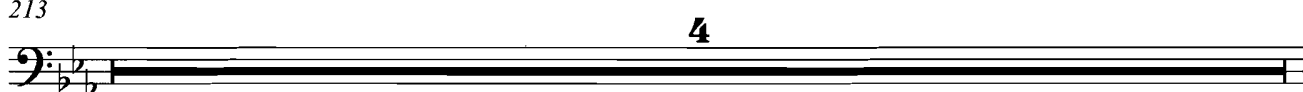
197



206



213



217

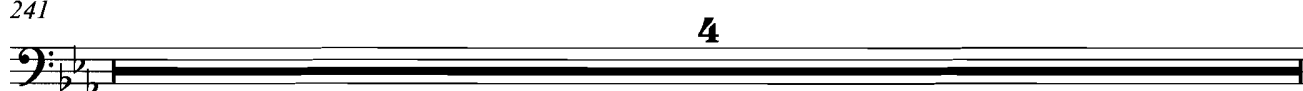
FINAL CHORUS



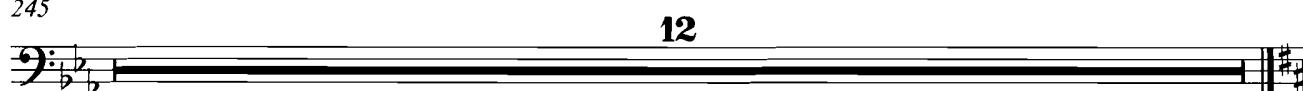
229



241



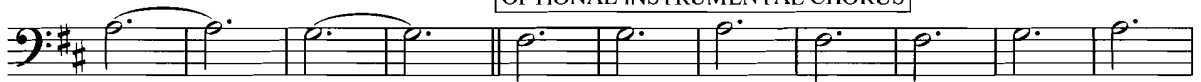
245



ALTERNATIVE ENDING (NO KEY CHANGE)

257

OPTIONAL INSTRUMENTAL CHORUS



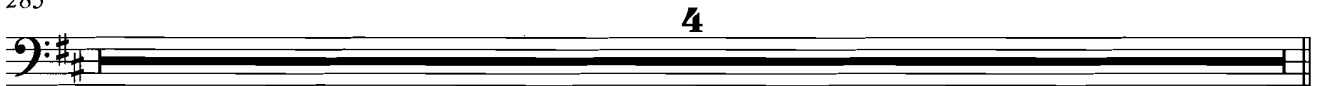
268



278



285



289

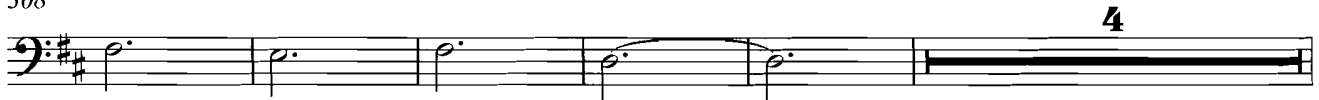
FINAL CHORUS



301



308



317

12

